



Coquillade

## 2026 PRIVATE HIRE



Marseille Provence  
Airport (MRS)



69 Rooms & Suites  
1 Six-Bedroom Villa



Culinary Experiences



Vineyard &  
Wine Cellar



Spa & Wellness



Cycling Centre





# Accommodations

## ROOMS & SUITES



### CLASSIC ROOM

323 to 495 Sq Ft

The classic room offers a serene retreat in an elegant and contemporary setting. It features a king-size bed (which can be configured as twin beds), a cozy sitting area, and a spacious bathroom with a shower, bathtub, and separate toilet.



### CHARM ROOM

323 to 495 Sq Ft

Located in the historic hamlet, these rooms blend Provençal charm with elegance. They feature a king-size bed, a sitting area, and a spacious bathroom with a bathtub or combined shower/bathtub, and separate toilet. Enjoy a balcony or terrace for a peaceful retreat.



### JUNIOR SUITE

441 to 614 Sq Ft

The Junior Suite, with its contemporary décor, is a serene retreat combining comfort and elegance. It features a king-size bed (which can be configured as twin beds) a cozy sitting area, and a spacious bathroom with a separate shower and bathtub. Its large terrace provides a private outdoor space.



## JUNIOR SUITE TERRACE AND VIEW

441 to 613 Sq Ft

---

Experience the Junior Suite with stunning views of the Luberon,



## CLASSIC SUITE

495 to 592 Sq Ft

---

Nestled in a Provençal farmhouse, the Classic Suite exudes rustic charm with wooden beams and exposed stonework. It offers a cozy living room, a peaceful bedroom, and a beautifully appointed bathroom, your perfect retreat in Provence.



## FAMILY SUITE

667 to 753 Sq Ft

---

The Family Suite combines comfort and style in an elegant setting. With spacious interiors, natural light, and a private terrace or balcony, it's perfect for family moments. It features a king-size bed, a cozy living area with a sofa bed, and can accommodate up to four guests.



## DUPLEX FAMILY SUITE

667 to 753 Sq Ft

---

The Duplex Family Suite offers a spacious, loft-style retreat with an open-plan lounge, a bathroom with shower and bath, and a separate WC. Enjoy a private balcony or terrace to soak up the Provençal sun.





## OUR EXCEPTIONAL SUITES



### SPA SUITE

678 to 775 Sq Ft

The Spa Suite offers a luxurious retreat with a whirlpool bath, private spa with hammam or sauna, and a terrace or balcony with stunning vineyard and olive grove views. Relax in the serene Provençal atmosphere, whether under the sun or shade.



### SUITE SUNSET

753 Sq Ft

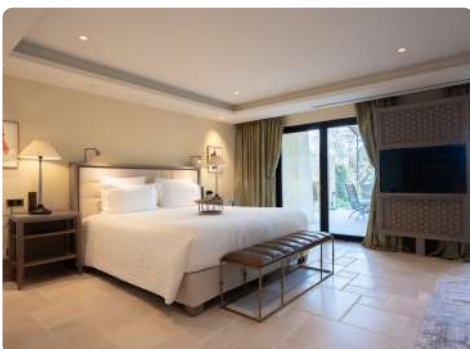
Enjoy an exceptional stay in this suite with a spacious bedroom, stylish living room, and whirlpool bathtub. Relax in the private garden with stunning Luberon views, unwind in the outdoor jacuzzi, and enjoy peaceful moments under the stars.



### POOL SUITE

818 Sq Ft

The Pool Suite offers an exclusive retreat with a duplex bedroom, spacious living room, and private 800 m² garden. It features a whirlpool bathtub, sauna, private pool, and outdoor jacuzzi with stunning Luberon views.



### CALISTA SUITE

645 Sq Ft

Named after a Greek goddess symbolizing perfection, this suite blends charm and modernity. It features a light-filled living space, an elegant terrace with stunning views, and an outdoor jacuzzi for added luxury. Adorned with art, it radiates serenity and elegance.



## OUR NEW LUBERON SUITES

The five new Luberon Suites, ranging from 60 to 110 sqm, are located in a separate wing with a private entrance and direct access to the spa. Three suites are of similar size, while two offer more generous space.

Each suite combines elegance, comfort, and authentic Provençal charm, creating the warm atmosphere of a refined local home. The terraces, equipped with private jacuzzis, offer breathtaking views over the surrounding hills and vineyards.

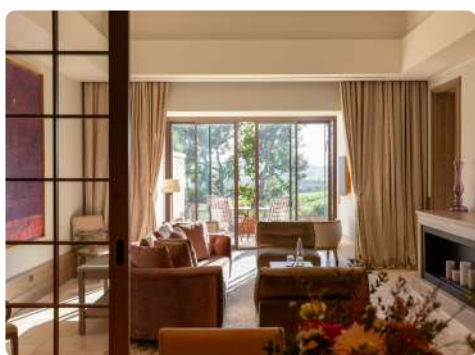
The entire wing can accommodate up to 10 adults, with connecting suites available.



### ELYSIA, IDA, CYRÈNE SUITE

646 Sq Ft – 430 Sq Ft terrace

Designed as true havens of serenity, they combine refined comfort with contemporary design. Each suite features a large wooden terrace with an outdoor jacuzzi, allowing guests to fully enjoy the gentle Provençal climate and a moment of calm surrounded by nature.



### DAPHNÉ SUITE

1 184 Sq Ft – 646 Sq Ft terrace

Let yourself be seduced by the Daphné Suite, a true sanctuary of well-being in the heart of the Luberon.

Featuring a spacious living room, an elegant walk-in closet, and an outdoor jacuzzi on a wooden terrace, it embodies the perfect balance between modern comfort and Provençal charm.



### CASSIOPEE SUITE

1 615 Sq Ft – 1 615 Sq Ft terrace

The most spacious of our suites, it captivates with its generous proportions: an elegant living area, a walk-in closet, a bright veranda, a winter garden, a private sauna, and a terrace with a swim lane. A true haven of peace where luxury and privacy come together in perfect harmony.



# Information

---

## ROOM CATEGORIES

---

6 classic rooms	1 sunset suite
15 charm rooms	1 pool suite
10 junior suites	1 Calista suite
13 junior suites terrace & view	1 Elysia suite
5 family suites	1 Daphné suite
5 classic suites	1 Cyrene suite
3 Spa suites	1 Ida Suite
4 family suites duplex	1 Cassiopée Suite

---

## FACILITIES

---

2 outdoor swimming pools	Clefs d'Or concierge
Tennis courts	Exclusive experiences
Pétanque courts	Conference rooms, seminars
Kids club (seasonal)	Reception venues: events,
Pet Friendly	birthdays, weddings
Heliport	Private hire





# Private

## THREE LEVELS



### LUBERON NEW SUITES

Up to 10 guests

Enjoy a private stay with up to 10 guests, in our elegant and modern 5 brand new Luberon suites.



### MAISON LUBERON

Up to 10 guests

Experience the charm of a fully private home with 5 suites, gardens and a swimming pool, accommodating up to 10 guests, in a warm and authentic setting.



### FULL ESTATE

Up to 110 guests

Reserve the entire domain, featuring 69 beautifully appointed rooms and suites, for the ultimate private retreat.

Contact us for more details on tailored experiences and availability.



# Full Estate Rates

## SEASONS

LOW	Saturday 7 March 2026	Thursday 16 April 2026
	Sunday 1 November 2026	Tuesday 29 December 2026
MIDDLE	Friday 17 April 2026	Thursday 4 June 2026
	Sunday 30 August 2026	Saturday 31 October 2026
HIGH	Friday 5 June 2026	Saturday 29 August 2026

## SEASONAL RATES

- Low season (March, November, December): €30,000/night
- Mid season (April, May, September, October): €49,500/night
- High season (June to August): €77,000/night

Private hire is available for a minimum of two nights, excluding the spa, restaurants and the Cycling Centre.





# Contact

FRANÇOIS GELLY - BUSINESS DEVELOPMENT DIRECTOR

[francois.gelly@coquillade.fr](mailto:francois.gelly@coquillade.fr)

---

Coquillade Provence - Relais & Châteaux  
Le Perrotet  
84400 Gargas  
France

---



+33 (0) 4 90 74 71 71



[info@coquillade.fr](mailto:info@coquillade.fr)



[coquillade.fr](http://coquillade.fr)



[@coquillade\\_provence](https://www.instagram.com/coquillade_provence)

